

The rechargeable batteries are lead-lead dioxide systems. The dilute sulfuric acid electrolyte is absorbed by separators and thus immobilized. Should the battery be accidentally overcharged producing hydrogen and oxygen, special one-way valves allow the gases to escape thus avoiding excessive pressure build-up. Otherwise, the battery is completely sealed and is, therefore, maintenance-free, leak proof and usable in any position.



Battery Construction

Component	Positive plate	Negative plate	Container	Cover	Safety valve	Terminal	Separator	Electrolyte
Raw material	Lead dioxide	Lead	ABS	ABS	Rubber	Copper	Fiberglass	Sulfuric acid

General Feature

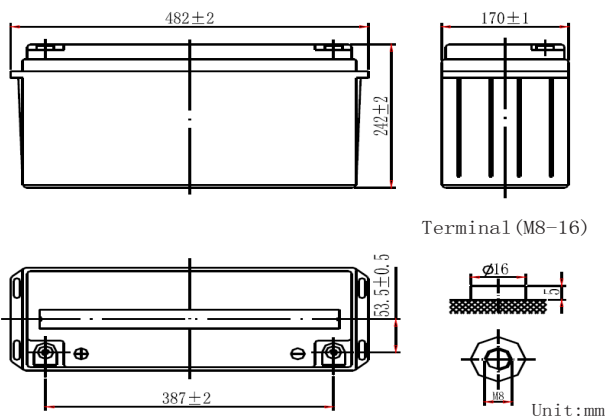
- Absorbent Glass Mat(AGM) technology for efficient gas recombination of up to 99% and freedom from electrolyte maintenance or water adding.
- Not restricted for air transport-complies with IATA/ICAO Special Provision A67.
- UL-recognized component.
- Can be mounted in any orientation.
- Computer designed lead, calcium tin alloy grid for high power density.
- Long service life, float or cyclic applications.
- Maintenance-free operation.
- Low self discharge.

Performance Characteristics

Capacity 77°F(25°C)	20 hour rate (7.5A、10.5V)	150Ah
	10 hour rate (14.5A、10.5V)	145Ah
	5 hour rate (25.6A、10.5V)	128Ah
	1 hour rate (90A、9.6V)	90Ah
Internal Resistance	Full charged Battery77°F(25°C): 4.5mΩ	
Capacity affected by Temperature (20 hour rate)	104° F(40°C)	102%
	77° F(25°C)	100%
	32° F(10°C)	85%
	5° F(-15°C)	65%
Self-Discharge 68°F(20°C)	Capacity after 3 month storage	90%
	Capacity after 6 month storage	80%
	Capacity after 12month storage	60%
Max. discharge current77°F(25°C): 950A(5S)		
Charge (Constant Voltage)	Float: 13.6~13.8 V/77° F(25°C)	
	Cycle:14.5~14.9 V/77°F/(25°C) Max.Current: 37.5A	

SPECIFICATION

Nominal voltage	12V
Number of cell	6
Length(mm/inch)	482/19.0
Width(mm/inch)	170/6.69
Height(mm/inch)	242/9.53
Total Height(mm/inch)	242/9.53
Approx. Weight(kg/lbs)	42.5/93.7



Discharge Constant Current (Amperes at 77°F(25°C))

End Point Volts/Cell	5min	10min	15min	30min	1h	3h	5h	10h	20h
1.60V	410	319	259	151	90.0	38.6	26.2	14.7	7.65
1.65V	381	300	245	146	88.1	38.1	26.0	14.7	7.60
1.70V	353	281	233	141	86.3	37.5	25.8	14.6	7.55
1.75V	324	263	220	135	84.5	36.4	25.6	14.5	7.50
1.80V	291	242	207	133	82.3	35.2	25.0	14.1	7.35

Discharge Constant Power (watts at 77°F(25°C))

End Point Volts/Cell	5min	10min	15min	30min	45min	1h	2h	3h	5h
1.60V	714	565	467	304	208	189	106	74.2	50.9
1.65V	687	542	452	295	204	186	104	73.3	50.6
1.70V	642	513	436	285	199	183	102	72.4	50.2
1.75V	595	485	417	277	194	178	100	71.5	49.8
1.80V	550	456	398	268	190	173	98.0	70.4	49.4

(Note)The above characteristics data are average values obtained Within three charge/discharge cycles not the minimum values.

